



# Better *your future*

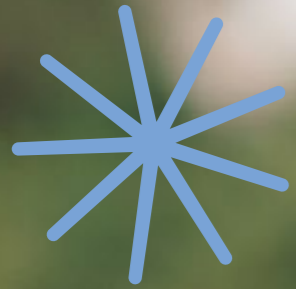
Open up a world of opportunity with our internationally recognised *Traffic Management, Plant Operations* and *English Language* Qualifications courses. Delivered by our experienced and professional team of experts.

[edifyworld.co.uk/thailand](https://edifyworld.co.uk/thailand)



Recognised UK  
government-funded  
training provider





# work study life



## Contents

Our values	04
Overview	05
Temporary Traffic Management Overview	07
Temporary Traffic Management Opportunities	08
NOCN Traffic Management Training/NVQs	10
NOCN Heavy Plant Machinery/ Equipment Training/NVQs	11
Traffic Management Case Study (Arthit's journey)	12
ESOL English Language Courses	14
English Language Case Study (Thanakrit's journey)	16
Supported to succeed	18



Recognised UK government-funded training provider

# Our values...



## Quality that matters

We deliver high-quality UK-certified training – recognised globally and tailored to equip Thailand's diverse communities and industries with the real-world skills needed to thrive in the workplace.



## Learner centred approach

We believe in a personalised approach to education, adapting our teaching to meet the unique needs of Thai learners. Our hands-on, industry-focused training provides the skills and support learners need to move forward with confidence.



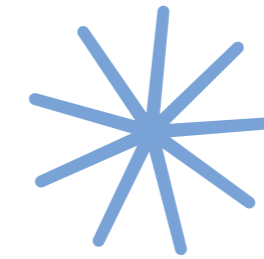
## Empowerment

We believe in finding and developing the potential in each individual. By making learning accessible and relevant, we help to unlock new opportunities and gain confidence in work and life.



## Professionalism

Our experienced instructors and staff are committed to creating a respectful, supportive, and structured learning environment where learners thrive.

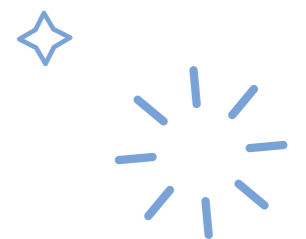


# Overview

## Your upskilling journey starts here!

We are an education and training provider delivering a range of specialist courses in *Traffic Management* and *Plant Operations* alongside *ESOL English language* programmes.

Building on the proven experience and expertise of our UK-based umbrella organisations, including a strong portfolio of UK government-funded training companies, we combine international standards with local delivery and a clear vision to inspire and support learners to develop their skills, improve their futures, and open up new opportunities in **work, study, and life**.



## Our Courses

# Temporary Traffic Management

Temporary Traffic Management (TTM) involves the planning, installation, operation, and removal of traffic control measures when normal road conditions are temporarily altered. Our courses focus on key principles including safety, legal compliance, operational efficiency, and professionalism, ensuring the protection of workers and the public while maintaining effective road operations.



## What we offer

### Our Traffic Management Courses:

- 12D M1/M2 Registered Traffic Management Operative (RTMO)
- 12D M3 Static Works Low Speed Dual Carriageway
- 12D M5 Multi Phase Traffic Signals
- 12D M6 Registered Lead Traffic Management Operative RLTMO
- 12D M7 Client Officer/Manager Training Course
- 12AB General Operative Training/Assessment

### + Our Traffic Management and Heavy Machinery NVQs

Our selection of NVQs are work-based qualifications that recognise practical skills and competence in the traffic management and heavy plant machinery. Assessed on the job, they cover key areas such as safe traffic control, legal compliance, and effective site operations, supporting career progression and industry standards.

# Our Temporary Traffic Management Opportunities



## 12D M7 Client Officer/ Manager Training Course

**Duration:** Two Day Course

For all levels of management, client officers, technicians and anyone not actually installing temporary traffic management (TTM), but requiring a knowledge of basic practice of TTM on urban and rural roads.

### Key Course Features:

- 12D Scheme qualifications (M1-M6).
- Health and Safety Operations.
- Provide technical support to staff.
- Understanding the implications of changing conditions on site and acceptable standard of equipment.

## 12D M6 Registered Lead Traffic Management Operative RLTMO

**Duration:** Two Day Course

For for all Registered Traffic Management Operatives (RTMO) who wish to become a Registered Lead Traffic Management Operative (RLTMO). The learner must have achieved 12D M2 status before undertaking the T6 training course. On completion, learners will be deemed competent to oversee M1/M2 work situations and other works situations where they have achieved competency (i.e. M3 to M5).

### Key Course Features:

- Plan the requirements for a range of traffic management layouts, calculate the equipment requirements and assess the standard of equipment that is acceptable to use.
- Risk assessment and planning.
- How to provide practical support to RTMOs, as and when required.
- Self limitations and deciding when management intervention is required.

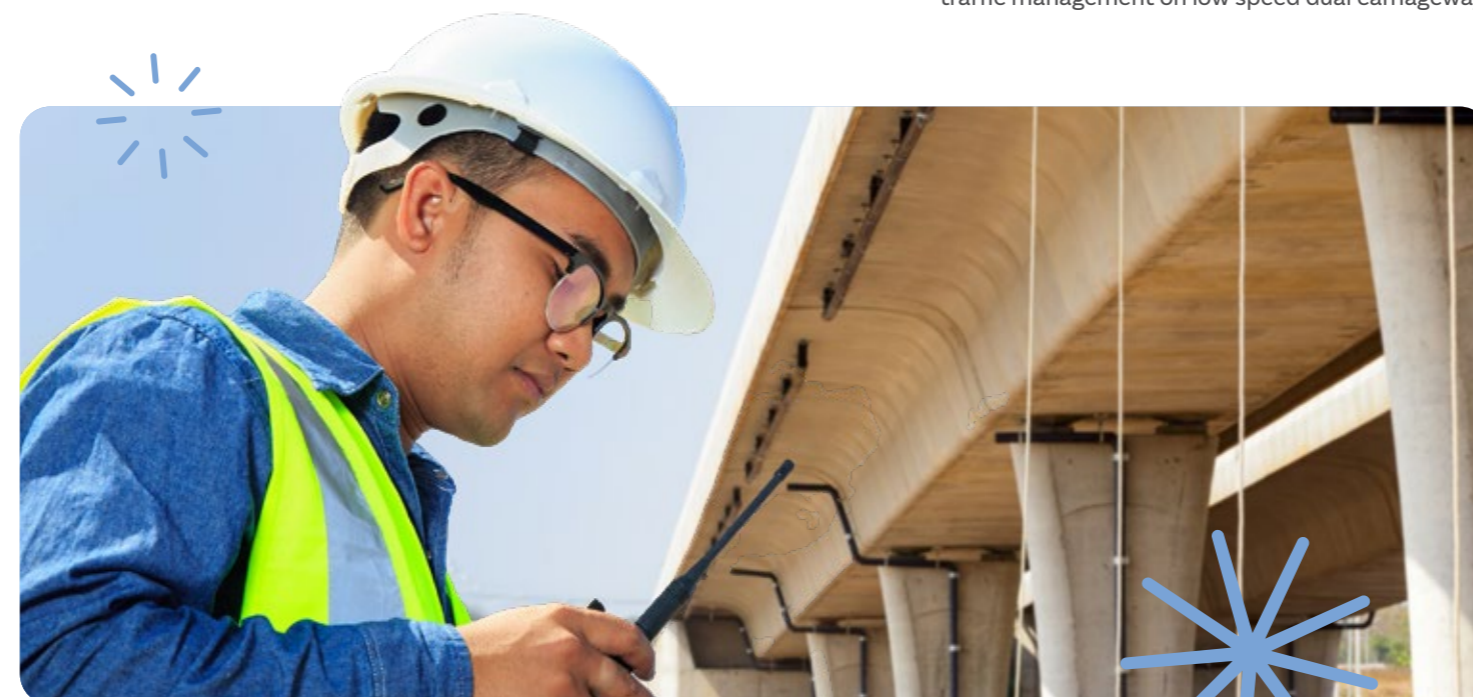
## 12D Multi Phase Traffic Signals

**Duration:** Half Day Course

For all Registered Traffic Management Operatives (RTMO) who wish to add this category to their 12D card. Become qualified to install, operate and control multi phase traffic signals configurations.

### Key Course Features:

- Datum Point Systems.
- Installation, Maintenance and removal.
- Trailer Towing/License Requirements.
- Be aware of the relevant Codes of Practice and other associated documentation when involved in traffic management.
- 12D M3 Static Works Low Speed Dual Carriageway.



## 12D M3 Static Works Low Speed Dual Carriageway

**Duration:** Half Day Course

For any Registered Traffic Management Operatives (RTMO) who wish to add this category to their card. Learners will gain practical knowledge to safely install, monitor, and remove traffic management systems on low-speed dual carriageways.

### Key Course Features:

- Relevant Codes of Practice and other associated documentation relating to Traffic Management.
- The equipment required in Temporary Traffic Management and the legal obligations when placing equipment on the highway.
- The requirements for working on dual carriageways restricted to 40mph or less.
- The requirements to install and maintain temporary traffic management on low speed dual carriageways.

## 12D M1/M2 Registered Traffic Management Operative (RTMO)

**Duration:** Two - Half Day Courses

For those aiming to become an M1/M2 Registered Traffic Management Operative (RTMO). The T1 course covers health and safety, risk assessments, equipment, signage, and basic site layouts, while T2 focuses on traffic control methods, site surveys, roundabouts, road closures, and diversions.

### Key Course Features:

- The principles involved when dealing with roundabouts, road closures and diversions.
- The equipment required in Temporary Traffic Management, and legal obligations when placing equipment on the highway.
- The requirements for Mobile and Short duration works.
- Different methods of both passive and positive traffic control.

## 12AB General Operative Training/ Assessment

**Duration:** One Day Course

This course has been designed for persons employed in the temporary traffic management industry to gain knowledge and practical skills to carry out their responsibilities for installing, maintaining and removing TTM on motorways and high-speed dual carriageways to the required standard.

### Key Course Features:

- Be aware of the process to become a 12A/B Traffic Management Operative.
- Implement health and safety requirements and obligations.
- Informed on specification of equipment required for 12AB lane closures.
- Perception of safe working practices in temporary traffic management.

# Our NOCN Traffic Management Training/NVQs

## NOCN Level 2 NVQ Certificates in Temporary Traffic Management (Construction)

### Static (High Speed Roads)

The Level 2 NVQ Certificate in Temporary Traffic Management (Construction) -Static (High Speed Roads) qualification has been developed for achievement in a real workplace environment which means you need to be employed to undertake this qualification. This qualification enables you, the learner, to demonstrate and recognise your skills, knowledge and understanding and to demonstrate your competence in a real workplace environment so you can work as a specialist in traffic management on static-high speed roads within the construction industry.

### Urban and Rural Roads

Also developed for achievement in a real workplace environment which means you need to be employed to undertake this qualification. This qualification enables you, the learner, to demonstrate and recognise your skills, knowledge and understanding and to demonstrate your competence in a real workplace environment so you can work as a specialist in Urban and Rural Roads traffic management within the construction industry.



Get in touch with our dedicated team today for more information on our NVQ courses!

Email us at [thailand@edifyworld.co.uk](mailto:thailand@edifyworld.co.uk)



# NOCN Heavy Plant Machinery/Equipment Training/NVQs



### Roller

Our Ride-On Roller Training Course equips you with the knowledge and practical skills needed to operate ride-on rollers safely, efficiently, and confidently on construction sites. Successful completion enables you to achieve your CPCS Red Card, demonstrating to employers that you are competent, compliant, and ready to work with these essential compaction machines. In a competitive industry, CPCS certification sets you apart—making this course a valuable step toward improving your employability and career prospects.



### Articulated Dump Truck

Safe operation of an articulated dump truck is at the core of this course. You will learn how to carry out all required checks and preparation procedures before and during site operations, ensuring the machine is fit for use at all times. The programme covers how to position the dumper safely and efficiently for both loading and discharging, as well as how to travel with and without a load across a range of terrain types. You will also develop a clear understanding of the machine's capabilities, purposes, and limitations, alongside all essential safety precautions. Throughout the training, strong emphasis is placed on adopting safe working practices that promote efficiency, compliance, and on-site safety.



### Excavator

Our 360 Excavator Training Course provides you with the practical skills, industry knowledge, and confidence to operate a 360-degree excavator safely and in accordance with CPCS standards. You will learn to carry out excavation, loading, and grading tasks, fit and use different bucket types, and position the machine safely and efficiently on site. The course also covers pre-use checks, basic adjustments, travelling within site conditions, and understanding the machine's capabilities and limitations. A strong focus on safety and accuracy ensures you are fully prepared for real-world construction site operations.



### Telescopic Handler

Our Telehandler Training Course introduces you to the safe and effective operation of this highly versatile machine, also known as a telescopic handler or boom lift. You will gain an understanding of how the extendable boom can be used with a range of attachments, including pallet forks, buckets, and winches, to carry out lifting and material-handling tasks on construction and industrial sites. With a strong focus on practical skills and safety, this course prepares you to transport materials efficiently and operate confidently in real site conditions.

Traffic Management Case Study

# Arthit's journey in Traffic Management

**Name:** Arthit Srisuwan

**Occupation:** Lead Traffic Management Operative

**Course:** 12D M6 Registered Lead Traffic Management Operative RLTMO

**Location:** Bangkok, Thailand

## Why Arthit took the course

"As a Registered Traffic Management Operative, I wanted to progress into a leadership role. I already held my 12D M2 status and had on-site experience, but I knew that becoming a Lead Traffic Management Operative required stronger planning skills and greater responsibility.

I enrolled on the 12D M6 Registered Lead Traffic Management Operative course to gain the knowledge and confidence needed to oversee works, support other operatives, and take the lead on traffic management decisions."

## Impact after completing the course

"The course was very practical and closely linked to real site situations. I learned how to plan traffic management layouts, calculate equipment requirements, assess equipment standards, and carry out effective risk assessments.

I also gained a clearer understanding of my responsibilities as a lead, including when to support RTMOs on site and when management intervention is required. After completing the course, I was trusted to oversee M1/M2 works and take on more responsibility. My supervisors noticed a clear improvement in my confidence and decision-making."

## Message to other learners

"If you're an RTMO looking to step up, this course is essential. It gives you the practical skills needed to plan safely, manage risk, and lead a team on site.

The 12D M6 course is a smart investment if you're serious about progressing your career in traffic management."

The course was very practical and closely linked to real site situations



## Key outcomes:

- ◆ Competency to oversee M1/M2 work sites
- ◆ Increased confidence in leading RTMOs on site with clearer decision-making during live works
- ◆ Progression to Lead Traffic Management responsibilities within months of completing the course

## Our Courses

# ESOL English Language Courses



### Meeting the specific professional English language demands of all Industries.

Edifyworld is the first UK-run vocational and Business English company in Southeast Asia providing NOCN certification. Our online courses are designed to provide maximum support for learners, improve English skills and open opportunities in work, study, and life across a range of industries, providing our learners with internationally recognised certifications that last for life!

### Student-centred supportive learning experiences

Our courses are designed to provide maximum support for learners, improve English skills and open opportunities in work, study, and life across a range of industries, providing our learners with internationally recognised certifications that last for life!

- All students undertake a pre-test (placement test) to identify which level course is most suitable for them.
- All courses are delivered by a well qualified and experienced ESOL teaching team online.
- All online sessions apply student-centred approaches.
- Extensive student support is provided within the online classes, group and one-to-one tutorials and mentoring online.
- A Learning Management System provides support for teaching and learning through all media within and beyond the online class sessions so that learners can access learning media online, upload assignments and receive personal feedback and support online.



### Courses tailored to meet the English needs of individual businesses or sectors

We have developed a proven tailored English Training Development and Delivery Model designed to develop English language course that address the needs of individual businesses, industrial sectors, and employees. This enables us to deliver specific courses for businesses that are flexible, effective and lead to internationally recognized qualifications.

1. Partner Consultation
2. Initial meeting to align goals and expectations
3. Training Needs Analysis: Identification of key workplace communication needs
4. Placement Testing: Assessment of participants' English proficiency
5. Course Design: Development of tailored courses by level
6. Course Delivery: Implementation of targeted English training
7. International Assessment: NOCN ESOL International Qualification examination
8. Certification: ESOL International Certification at course level
9. Evaluation: Review of outcomes and programme impact

### NOCN ESOL International Qualification

Edifyworld offer NOCN accredited ESOL International qualification courses at six levels (A1, A2, B1, B2, C1, C2), and we have developed our own AO basic course for beginners. Our courses are perfect for adults looking to improve their Business English language skills in any industry.

- NOCN's world-leading, Ofqual approved ESOL International qualifications are designed to support learners wishing to work in any industrial sector, company, country, or university in the world.
- Edifyworld offers courses at all six levels from the Common European Framework of Reference for Languages (CEFR): A1, A2, B1, B2, C1, C2, and comprehensive tests of English in speaking, listening reading and writing.
- Examinations are offered globally.
- The qualifications are all Internationally recognized.
- It is a lifelong certification, so you do not have to repeat the examination every two years.

### ESOL International General English A1, A2, B1, B2, C1 and C2 level courses

**Duration:** 8 -18 weeks

We have also developed online General English courses for AO and all six ESOL International qualification levels (A1 - C2). These courses vary in length to suit the needs of learners (8 - 18 weeks).

These General English language courses offer fast, effective progression through CEFR levels using a modern, learner-centred and multimedia approach. Learners develop confidence across all four language skills through interactive content and guided online support, with all materials, assessments, LMS access, and internationally recognised ESOL certification included in the very competitive programme fee.



## English Language Case Study

# Thanakrit's journey in Highway Engineering

**Name:** Thanakrit Phiphatwong  
**Occupation:** Highway Engineer  
**Course:** ESOL International General English B2  
**Location:** Rangsit, Thailand

## Why Thanakrit took the course

"In my daily work, I deal with international consultants, contractors and investors. Most of our documentation and communication are in English, but I lacked confidence in using the right terms, especially during phone calls and meetings. I joined the Vocational English course because I wanted to improve my professional communication skills and grow in my career that can be recognized locally and internationally."

## Impact after completing the course

"The course was very practical. I learned how to use industry-specific vocabulary, write better emails, understand better of how the global standard operating procedure works, and handle real-life highway and engineering related conversations in English."

Within two months, my manager noticed the difference in how I presented reports and led discussions with foreign partners. I now feel more confident, and I was recently promoted to a more senior role."

## Message to other learners

"If you work in the Highways industry, don't wait. English is not just a bonus - it's a necessity if you want to step up. This course gives you exactly what you need for the job, not just general English. It's a smart investment in your future."

## Key outcomes:

- ◆ 85% improvement in email writing clarity (based on pre and post course assessments)
- ◆ Promotion within 3 months of completing the course
- ◆ Increased confidence in leading international calls and meetings

# Supported to succeed

We're proud to be supported by our UK based parent company, Edify Group who have a strong proven-track record in building successful UK government funded, educational training across a wide range of industries and sectors.

As a purpose-driven business group with a multi-sector focus, Edify Group has a mission is to create meaningful impact across every sector we serve – empowering people, elevating experiences, and delivering innovative, results-focused solutions.



**A successful training and educational business portfolio**



Recognised UK government-funded training provider



Empentis Training Solutions is a Newcastle-based provider specialising in flexible, remote and blended apprenticeship delivery UK-wide.

**Ofsted - Good**

Providing tomorrow's goods, today.



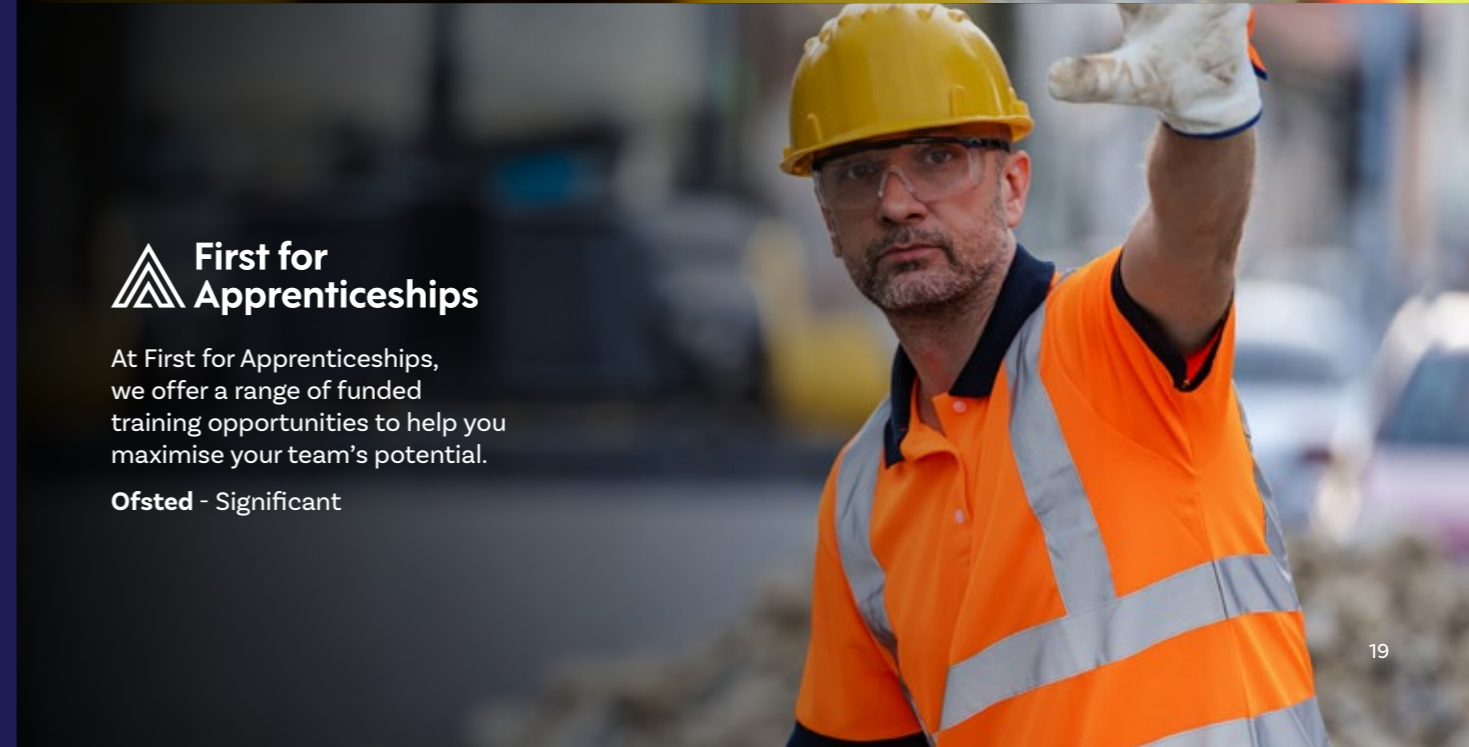
Capital 4 Training is a Newcastle-based provider delivering high-quality Plant Machine Operative Apprenticeships across the UK.

**Ofsted - Good**



At First for Apprenticeships, we offer a range of funded training opportunities to help you maximise your team's potential.

**Ofsted - Significant**



For more information on how we can help upskill your team, get in touch with us today.

[thailand@edifyworld.co.uk](mailto:thailand@edifyworld.co.uk)



✉ [thailand@edifyworld.co.uk](mailto:thailand@edifyworld.co.uk)

📍 1298/6 Lumpini Place  
Narathiwat-Chao Phraya  
Rama III Road, Chong Nonsi  
Yan Nawa District  
Bangkok 10120  
Thailand



[edifyworld.co.uk/thailand](https://edifyworld.co.uk/thailand)